

ROUGH TERRAIN CRANE

TR-160M

JAPANESE SPECIFICATIONS

TR

OUTLINE	SPEC. NO.
6-section Boom, 1-staged Jib H-type Outrigger	TR-160M-3-00103

Control No. JA-04

TR-160M

CRANE SPECIFICATIONS

CRANE CAPACITY

6.5m Boom	16,000kg	at 3.0m	(6part-line)
10.7m Boom	12,000kg	at 4.0m	(6part-line)
14.9m Boom	9,000kg	at 4.5m	(4part-line)
19.1m Boom	7,000kg	at 5.5m	(4part-line)
23.3m Boom	5,000kg	at 6.0m	(4part-line)
27.5m Boom	3,500kg	at 7.0m	(4part-line)
3.5m Jib	2,000kg	at 70°	(1part-line)
Single top	3,000kg		(1part-line)

MAX.LIFTING HEIGHT

Boom	27.8m
Jib	31.2m

MAX.WORKING RADIUS

Boom	24.0m
Jib	26.1m

BOOM LENGTH

6.5m – 27.5m

BOOM EXTENSION

21.0m

BOOM EXTENSION SPEED

21.0m/87s

JIB LENGTH

3.5m

MAIN WINCH SINGLE LINE WINDING SPEED

110m/min (5th layer)

MAIN WINCH HOOK SPEED

28.0m/min (4 part-line)

AUXILIARY WINCH SINGLE LINE WINDING SPEED

96m/min (3rd layer)

AUXILIARY WINCH HOOK SPEED

96m/min (1 part-line)

BOOM ELEVATION ANGLE

-2° – 82°

BOOM ELEVATION SPEED

-2° – 82°/35s

SWING ANGLE

360° continue

SWING SPEED

2.6min⁻¹ (rpm)

WIRE ROPE

Main Winch

14mm x 155m (Diameter x Length)
Spin-resistant wire rope

Auxiliary Winch

14mm x 70m (Diameter x Length)
Spin-resistant wire rope

BOOM

6-section hydraulically telescoping boom of box construction
(stages 2,3: synchronized; stages 4,5,6: synchronized)

BOOM EXTENSION

2 double-acting hydraulic cylinders
2 wire rope type telescoping devices
With flow regulator valve with pressure compensation

JIB

Single stage which swings from and stores under the boom

Triple offset (5°, 25°, 45°) type

SINGLE TOP

Mounted and fixed on the top boom section.

HOIST

Driven by hydraulic motor and via spur gear reducer.
With free-fall device.

Automatic brake (with foot brake for free-fall device)

2 single winches

With flow regulator valve with pressure compensation

BOOM ELEVATION

2 double-acting hydraulic cylinders

With flow regulator valve with pressure compensation

SWING

Hydraulic motor driven planetary gear reducer

Swing bearing

Swing free/lock changeover type

Negative brake

OUTRIGGERS

Fully hydraulic H-type (floats mounted integrally)

Slides and jacks each provided with independent operation device.

Fully extended width 5.2m

Middle extended width 4.8m, 4.4m, 3.2m

Minimum extended width 1.79m

OPERATION METHOD

Hydraulic pilot valve operation

MAX. VERTICAL LOAD CAPACITY OF OUTRIGGER

18.3t

POWER TAKE-OFF

PTO wet multi-plate clutch

HYDRAULIC PUMPS

2 variable piston pumps

2 gear pumps

HYDRAULIC OIL TANK CAPACITY

295 liters

SAFETY DEVICES

Automatic moment limiter (AML)

Swing automatic stop device

Over-winding cutout device

Working area control device

Free-fall interlock device

Outrigger extension width detector

Level gauge

Hook safety latch

Hydraulic safety valve

Telescopic counterbalance valve

Elevation counterbalance valve

Jack pilot check valve

EQUIPMENT

Air-conditioner with dehumidifier

Hydraulic oil temperature indication lamp

Radio

Oil cooler

Visual-type winch drum rotation indicator

Operation pedals

ISO arrangement: for telescoping/auxiliary hoisting

TADANO arrangement: for elevating/telescoping

CARRIER SPECIFICATIONS

ENGINE

Model HINO H07C-TF
 Type 4-cycle, 6-cylinder, direct-injection, water-cooled diesel engine (with turbo charger)
 Piston displacement 6,728cc
 Max. output 162kW(220PS) at 2,800rpm
 Max. torque 657N·m (67.0kgf·m) at 1,600rpm

TORQUE CONVERTER

3-element, 1-stage unit (with automatic lock-up mechanism)

TRANSMISSION

Power shift type (wet multi-plate clutch)
 4 forward and 1 reverse speeds (with Hi/Low settings)

REDUCER

Axle dual-ratio reduction

DRIVE

2-wheel drive (4X2) / 4-wheel drive (4X4) selection

FRONT AXLE

Full floating type

REAR AXLE

Full floating type

SUSPENSION

Front Parallel leaf spring type
 Rear Parallel leaf spring type

STEERING

Fully hydraulic power steering
 With reverse steering correction mechanism

BRAKE SYSTEM

Service Brake
 Hydro-pneumatic disk brake
 Parking Brake
 Mechanically operated, internal expanding duo-servo shoe type acting on drum at transmission case rear.
 Auxiliary Brake
 Electro-pneumatic operated exhaust brake
 Eddy current retarder
 Auxiliary braking device for operations

FRAME

Welded box-shaped structure

ELECTRIC SYSTEM

12 V DC. 2 batteries of 24V (120Ah)

FUEL TANK CAPACITY

250 liters

TIRES

Front 325/95R24 161E ROAD
 Rear 325/95R24 161E ROAD

CAB

One-man type
 With interior equipment
 Liquid filled rubber mounted type
 Fully adjustable foldable seat (with headrest and seat belt)
 Adjustable handle (tilt, telescoping)
 Intermittent type windshield/roof wiper (with washer)
 Power window
 Side visor

SAFETY DEVICES

Emergency steering device
 Spring lock device
 Rear wheel steering lock device
 Engine over-run alarm
 Overshift prevention device
 Parking brake alarm

EQUIPMENT

Centralized oiling device
 Electric mirror

GENERAL DATA

DIMENSIONS

Overall length	8,520mm
Overall width	2,200mm
Overall height	3,140mm
Wheel base	3,200mm
Tread Front	1,820mm
Rear	1,820mm

WEIGHTS

Gross vehicle weight	
Total	19,895kg
Front	9,950kg
Rear	9,945kg

PERFORMANCE

Max. traveling speed	49km/h
Gradeability (tan θ)	0.6
Min. turning radius	5.1m (4-wheel steering) 8.7m (2-wheel steering)

TOTAL RATED LOADS

(1) With outriggers set
[BOOM]

Unit:ton

Outriggers fully extended (5.2m)							-360°-
A B	6.5m	10.7m	14.9m	19.1m	23.3m	27.5m	
2.5m	16.00	12.00	9.00	7.00			
3.0m	16.00	12.00	9.00	7.00			
3.5m	14.00	12.00	9.00	7.00	5.00	3.50	
4.0m	12.50	12.00	9.00	7.00	5.00	3.50	
4.5m	11.50	11.10	9.00	7.00	5.00	3.50	
5.0m		10.25	8.90	7.00	5.00	3.50	
5.5m		9.40	8.20	7.00	5.00	3.50	
6.0m		8.80	7.60	6.60	5.00	3.50	
7.0m		6.75	6.40	5.80	4.70	3.50	
8.0m		5.30	5.00	5.00	4.15	3.35	
9.0m		4.30	4.00	4.25	3.70	3.00	
10.0m		(8.7m)	3.25	3.50	3.30	2.75	
11.0m			2.65	2.95	3.00	2.50	
12.0m			2.15	2.45	2.70	2.30	
13.0m			1.80	2.05	2.30	2.10	
14.0m			(12.9m)	1.75	2.00	1.95	
15.0m				1.45	1.70	1.75	
16.0m				1.25	1.45	1.50	
17.0m				1.05	1.25	1.30	
18.0m					1.05	1.10	
19.0m					0.90	0.95	
20.0m					0.75	0.80	
22.0m					0.60	0.60	
24.0m					(21.3m)	0.45	
a (°)	0 ~ 82						

A= Boom length B= Working radius

a= Boom angle range (for the unladen condition)

[BOOM]

Unit:ton

Outriggers middle extended (4.8m) –Over sides–						
A \ B	6.5m	10.7m	14.9m	19.1m	23.3m	27.5m
2.5m	16.00	12.00	9.00	7.00		
3.0m	16.00	12.00	9.00	7.00		
3.5m	14.00	12.00	9.00	7.00	5.00	3.50
4.0m	12.50	12.00	9.00	7.00	5.00	3.50
4.5m	11.50	11.10	9.00	7.00	5.00	3.50
5.0m		10.25	8.90	7.00	5.00	3.50
5.5m		9.20	8.20	7.00	5.00	3.50
6.0m		7.90	7.60	6.60	5.00	3.50
7.0m		5.85	5.85	5.80	4.70	3.50
8.0m		4.55	4.50	4.85	4.15	3.35
9.0m		3.80	3.55	3.90	3.70	3.00
10.0m		(8.7m)	2.85	3.15	3.30	2.75
11.0m			2.30	2.60	2.80	2.50
12.0m			1.85	2.15	2.35	2.30
13.0m			1.50	1.75	1.95	2.10
14.0m			(12.9m)	1.45	1.65	1.75
15.0m				1.20	1.40	1.50
16.0m				1.00	1.20	1.25
17.0m				0.85	1.00	1.05
18.0m					0.85	0.90
19.0m					0.70	0.75
20.0m					0.55	0.60
22.0m						0.40
a (°)	0~82				22~82	32~82

A= Boom length B= Working radius
a= Boom angle range (for the unladen condition)

[BOOM]

Unit:ton

Outriggers middle extended (4.4m) –Over sides–						
A B	6.5m	10.7m	14.9m	19.1m	23.3m	27.5m
2.5m	16.00	12.00	9.00	7.00		
3.0m	16.00	12.00	9.00	7.00		
3.5m	14.00	12.00	9.00	7.00	5.00	3.50
4.0m	12.50	12.00	9.00	7.00	5.00	3.50
4.5m	11.50	11.10	9.00	7.00	5.00	3.50
5.0m		9.50	8.90	7.00	5.00	3.50
5.5m		8.05	7.90	7.00	5.00	3.50
6.0m		6.85	6.70	6.60	5.00	3.50
7.0m		5.05	5.00	5.35	4.70	3.50
8.0m		3.85	3.85	4.15	4.15	3.35
9.0m		3.20	3.00	3.30	3.55	3.00
10.0m		(8.7m)	2.35	2.65	2.90	2.75
11.0m			1.85	2.15	2.35	2.50
12.0m			1.45	1.75	1.95	2.10
13.0m			1.10	1.40	1.60	1.75
14.0m			(12.9m)	1.15	1.35	1.45
15.0m				0.95	1.10	1.25
16.0m				0.75	0.90	1.05
17.0m				0.60	0.75	0.85
18.0m					0.60	0.70
19.0m						0.55
20.0m						0.40
a (°)	0~82			10~82	34~82	40~82

A= Boom length B= Working radius

a= Boom angle range (for the unladen condition)

[BOOM]

Unit:ton

		Outriggers middle extended (3.2m)					–Over sides–
B \ A		6.5m	10.7m	14.9m	19.1m	23.3m	27.5m
2.5m		16.00	12.00	9.00	7.00		
3.0m		14.50	12.00	9.00	7.00		
3.5m		10.50	10.40	9.00	7.00	5.00	3.50
4.0m		8.00	8.25	7.75	7.00	5.00	3.50
4.5m		6.50	6.60	6.30	7.00	5.00	3.50
5.0m			5.45	5.30	5.80	5.00	3.50
5.5m			4.60	4.40	4.90	5.00	3.50
6.0m			3.90	3.75	4.15	4.40	3.50
7.0m			2.90	2.75	3.10	3.30	3.25
8.0m			2.20	2.05	2.35	2.60	2.70
9.0m			1.70	1.50	1.80	2.05	2.15
10.0m			(8.7m)	1.10	1.40	1.60	1.70
11.0m				0.75	1.05	1.25	1.35
12.0m				0.50	0.80	0.95	1.10
13.0m					0.55	0.75	0.85
14.0m					0.40	0.55	0.65
15.0m						0.40	0.50
a (°)		0~82		24~82	36~82	46~82	55~82

Unit:ton

		Outriggers minimum extended (1.79m)					–Over sides–
B \ A		6.5m	10.7m	14.9m	19.1m	23.3m	27.5m
2.5m		7.00	7.00	7.00	6.00		
3.0m		5.60	5.30	5.40	5.50		
3.5m		4.20	4.10	4.10	4.20	4.60	3.50
4.0m		3.30	3.25	3.20	3.50	3.75	3.50
4.5m		2.80	2.60	2.55	2.90	3.05	3.20
5.0m			2.15	2.05	2.35	2.55	2.70
5.5m			1.75	1.60	1.90	2.15	2.25
6.0m			1.40	1.25	1.60	1.80	1.90
7.0m			0.85	0.70	1.05	1.25	1.40
a (°)		0~82	38~82	57~82	65~82	70~82	73~82

A= Boom length B= Working radius

a= Boom angle range (for the unladen condition)

[JIB]

Outriggers fully extended (5.2m) -360°-						
C	27.5m Boom + 3.5m Jib					
	5°		25°		45°	
D	B (m)	M (t)	B (m)	M (t)	B (m)	M (t)
E (°)	B (m)	M (t)	B (m)	M (t)	B (m)	M (t)
82	4.2	2.00	5.1	1.50	6.1	1.25
75	8.1	2.00	8.8	1.50	9.8	1.25
70	10.8	2.00	11.4	1.50	12.3	1.25
65	13.2	1.60	13.8	1.35	14.6	1.25
60	15.5	1.35	16.1	1.15	16.8	1.15
55	17.7	1.05	18.2	1.10	18.8	1.00
50	19.7	0.85	20.1	0.80	20.7	0.80
45	21.6	0.65	21.9	0.60	22.3	0.60
40	23.2	0.50	23.5	0.45		
35	24.7	0.35	24.9	0.35		
30	26.0	0.25	26.1	0.25		
a (°)	29~82			44~82		

Outriggers middle extended (4.8m) -Over sides-						
C	27.5m Boom + 3.5m Jib					
	5°		25°		45°	
D	B (m)	M (t)	B (m)	M (t)	B (m)	M (t)
E (°)	B (m)	M (t)	B (m)	M (t)	B (m)	M (t)
82	4.2	2.00	5.1	1.50	6.1	1.25
75	8.1	2.00	8.8	1.50	9.8	1.25
70	10.8	2.00	11.4	1.50	12.3	1.25
65	13.2	1.60	13.8	1.35	14.6	1.25
60	15.5	1.25	16.1	1.15	16.8	1.15
55	17.6	0.90	18.2	0.85	18.8	0.85
50	19.7	0.65	20.1	0.65	20.6	0.60
45	21.5	0.45	21.9	0.50	22.3	0.45
40	23.2	0.35	23.5	0.35		
a (°)	39~82			44~82		

Outriggers middle extended (4.4m) -Over sides-						
C	27.5m Boom + 3.5m Jib					
	5°		25°		45°	
D	B (m)	M (t)	B (m)	M (t)	B (m)	M (t)
E (°)	B (m)	M (t)	B (m)	M (t)	B (m)	M (t)
82	4.2	2.00	5.1	1.50	6.1	1.25
75	8.1	2.00	8.8	1.50	9.8	1.25
70	10.8	2.00	11.4	1.50	12.3	1.25
65	13.1	1.45	13.8	1.35	14.6	1.25
60	15.4	1.00	16.0	1.00	16.8	0.90
55	17.6	0.70	18.1	0.70	18.7	0.65
50	19.6	0.50	20.1	0.50	20.6	0.45
45	21.5	0.30	21.9	0.30	22.2	0.30
a (°)	44 ~ 82					

Outriggers middle extended (3.2m) -Over sides-						
C	27.5m Boom + 3.5m Jib					
	5°		25°		45°	
D	B (m)	M (t)	B (m)	M (t)	B (m)	M (t)
E (°)	B (m)	M (t)	B (m)	M (t)	B (m)	M (t)
82	4.2	2.00	5.1	1.50	6.1	1.25
75	8.1	2.00	8.8	1.50	9.8	1.25
72	9.6	1.50	10.3	1.30	11.3	1.25
70	10.6	1.20	11.3	1.10	12.2	1.05
65	13.0	0.75	13.7	0.70	14.4	0.65
60	15.3	0.40	16.0	0.35	16.6	0.35
a (°)	59 ~ 82					

B= Working radius C= Jib length D= Jib offset
 E= Boom angle M= Total rated loads
 a= Boom angle range (for the unladen condition)

PRECAUTIONS TO BE TAKEN WHEN THE OUTRIGGERS ARE EXTENDED:

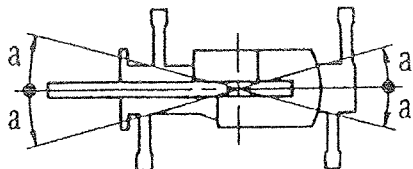
1. The total rated loads shown are for the case where the crane is set horizontally on firm level ground. They include the weights of the slings and hooks (main hook: 160kg, auxiliary hook: 60kg).
The values above the bold lines are based on the crane strength while those below are based on the crane stability.
2. Since the working radii are based on the actual values including the deflection of the boom, operations should be performed in accordance with the working radii.
3. Jib operations should be performed in accordance with the boom angle, irrespective of the boom length. The working radii are reference values for the case where the jib is mounted on a 27.5m boom.
4. The total rated load for the single top shall be the value obtained by subtracting the weight of the hook mounted on the boom from the total rated load of the boom and must not exceed 3.0t.
5. As a rule, free-fall operation should be performed only when lowering the hook alone. If a hoisted load must be lowered by free-fall operation, the load must be kept below 1/5th of the total rated load and sudden braking operations must be avoided.
6. The table below shows the standard number of part lines for each boom length. The load per line should not exceed 26.2kN (2.67tf) for the main winch and 29.4kN (3.0tf) for the auxiliary winch.

A	6.5m	10.7m	14.9m	19.1m	23.3m	27.5m	Single top
H	6	6	4	4	4	4	1

A= Boom length H= No. of part-lines

7. The hoisting performance for the "Over sides" range will differ according to the extended width of the outriggers. Operations should be performed in accordance with the performance corresponding to the extended width. Also, although the hoisting performances for the "Over front" and "Over rear" ranges are equivalent to those of the "outriggers fully extended" condition, the front and rear ranges (angle a) will differ according to the width to which the outriggers are extended in the left and right directions.

Extended width	Middle extended (4.8m)	Middle extended (4.4m)	Middle extended (3.2m)	Minimum extended (1.79m)
Angle a°	30	25	15	5



(2) Without outriggers

Unit:ton

B (m)	Stationary							
	6.5m Boom		10.7m Boom		14.9m Boom		19.1m Boom	
	K	G	K	G	K	G	K	G
3.0	8.00	4.40	7.50	4.50	7.00	4.65	5.50	5.00
3.5	7.70	3.50	7.50	3.65	7.00	3.70	5.50	4.00
4.0	7.30	2.80	7.30	2.90	6.80	3.00	5.50	3.15
4.5	6.60	2.20	6.40	2.40	5.75	2.40	5.35	2.50
5.0			5.45	1.90	4.85	1.85	5.00	2.00
5.5			4.60	1.50	4.15	1.40	4.45	1.65
6.0			3.95	1.15	3.70	1.05	3.90	1.35
7.0			3.00	0.60	3.00	0.50	3.00	0.85
8.0			2.30		2.30		2.45	0.45
9.0					1.70		1.90	
10.0					1.25		1.45	
11.0					0.95		1.15	
12.0					0.65		0.85	
13.0							0.60	
14.0							0.40	
a (°)	0~82		38~82		24~82	57~82	36~82	62~82

Unit:ton

B (m)	Creep (travelling at 1.6km/h or less)							
	6.5m Boom		10.7m Boom		14.9m Boom		19.1m Boom	
	K	G	K	G	K	G	K	G
3.0	6.70	3.70	6.30	3.80	5.90	3.80	4.60	4.20
3.5	6.50	2.95	6.30	3.00	5.90	3.10	4.60	3.35
4.0	6.10	2.35	6.00	2.45	5.75	2.50	4.60	2.65
4.5	5.50	1.85	5.40	2.00	4.85	2.00	4.50	2.10
5.0			4.60	1.60	4.10	1.55	4.20	1.65
5.5			3.85	1.25	3.50	1.15	3.70	1.35
6.0			3.00	0.95	3.10	0.85	3.50	1.10
7.0			2.50	0.50	2.50	0.40	2.50	0.70
8.0			1.90		1.90		2.05	
9.0					1.40		1.60	
10.0					1.05		1.20	
11.0					0.80		0.95	
12.0					0.55		0.70	
13.0							0.50	
a (°)	0~82		38~82		24~82	57~82	42~82	65~82

B= Working radius K= Front G= 360°

a= Boom angle range (for the unladen condition)

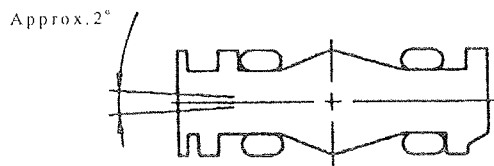
PRECAUTIONS TO BE TAKEN WHEN THE OUTRIGGERS ARE NOT MOUNTED:

- The total rated loads shown are for the case where the tire air pressure on firm level ground is as specified 900kPa (9.00kgf/cm²) and the crane is completely spring-locked. They include the weights of the slings and hooks (main hook: 160kg, auxiliary hook: 60kg).
The values above the bold lines are based on the crane strength while those below are based on the crane stability. The foundation, working conditions, etc. should be taken into consideration for actual work.
- Since the working radii are based on the actual values including the deflection of the boom and the tires, operations should be performed in accordance with the working radii.
- The table below shows the standard number of part lines for each boom length. The load per line should not exceed 26.2kN (2.67tf) for the main winch and 29.4kN (3.0tf) for the auxiliary winch.

A	6.5m	10.7m	14.9m	19.1m	Single top
H	4	4	4	4	1

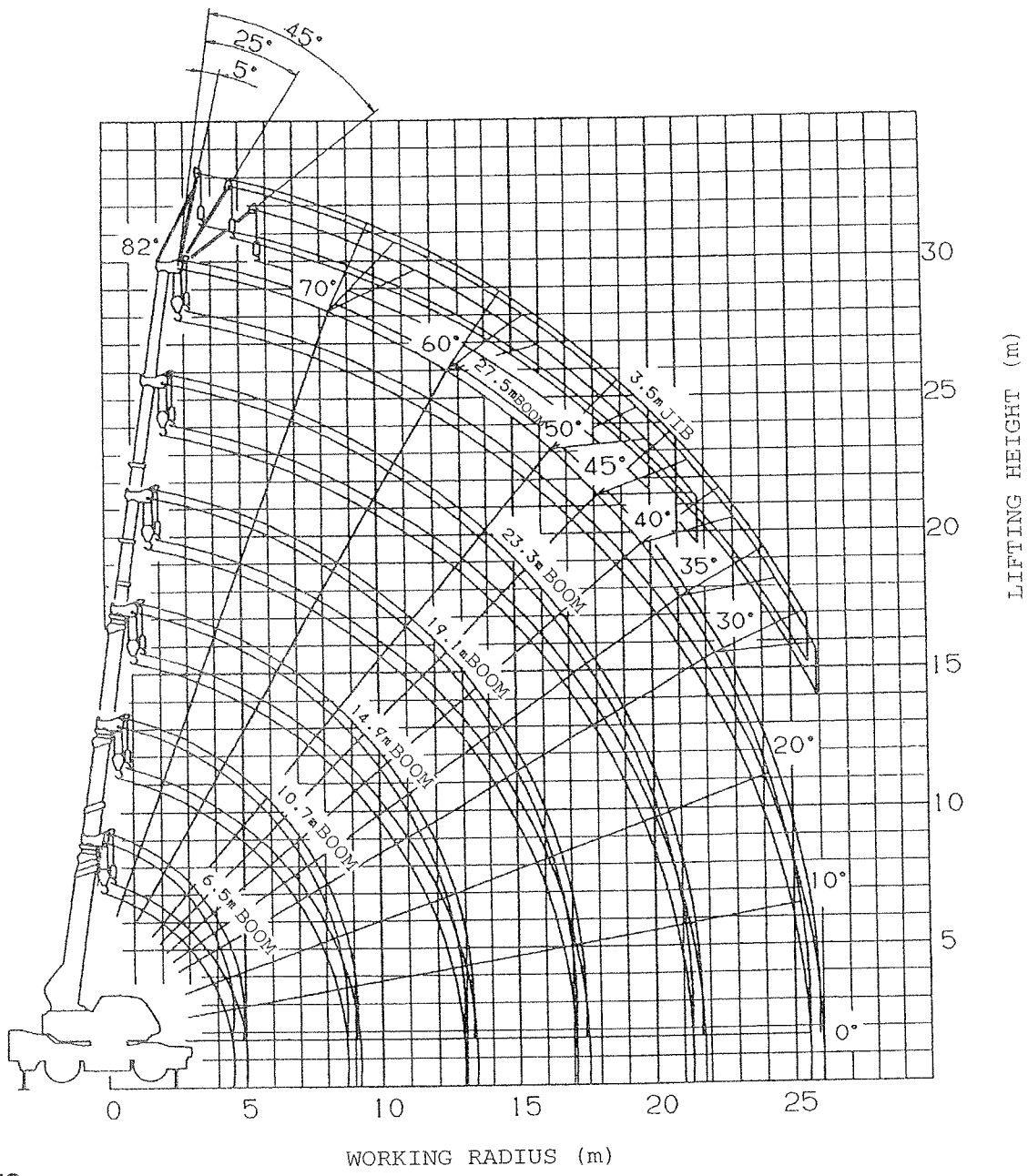
A= Boom length H= No. of part-lines

- "Over front" crane operations should be performed only when the AML "over-front area indicator lamp" is lit. The boom must be kept inside a 2° area over front of the carrier when performing "Over front" crane operations without the outriggers.



- The total rated load for the single top shall be the value obtained by subtracting the weight of the hook mounted on the boom from the total rated load of the boom and must not exceed 3.0t.
- Free-fall operations should not be performed without outriggers.
Booms over 19.1m in length and jibs should not be used without outriggers.
- The "Drive Mode Selection" switch should be set to "4-wheel / Lo" for creeping while hoisting a load and the shift lever should be set to first.
- When creeping while hoisting a load, the swing brake should be applied, the load should be kept as close to the ground as possible but not touching the ground and the speed should be kept at 1.6km/h or less. In particular, any abrupt steering, starting or braking must be avoided.
- Crane operations should not be performed when creeping while hoisting a load.

WORKING RADIUS - LIFTING HEIGHT



NOTES:

1. The deflection of the boom is not incorporated in the figure above.
2. The figure above is for the case where the outriggers are fully extended (360°).

DIMENSIONS (1/100)

